

## Top Loader Cabinet

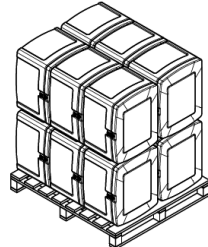


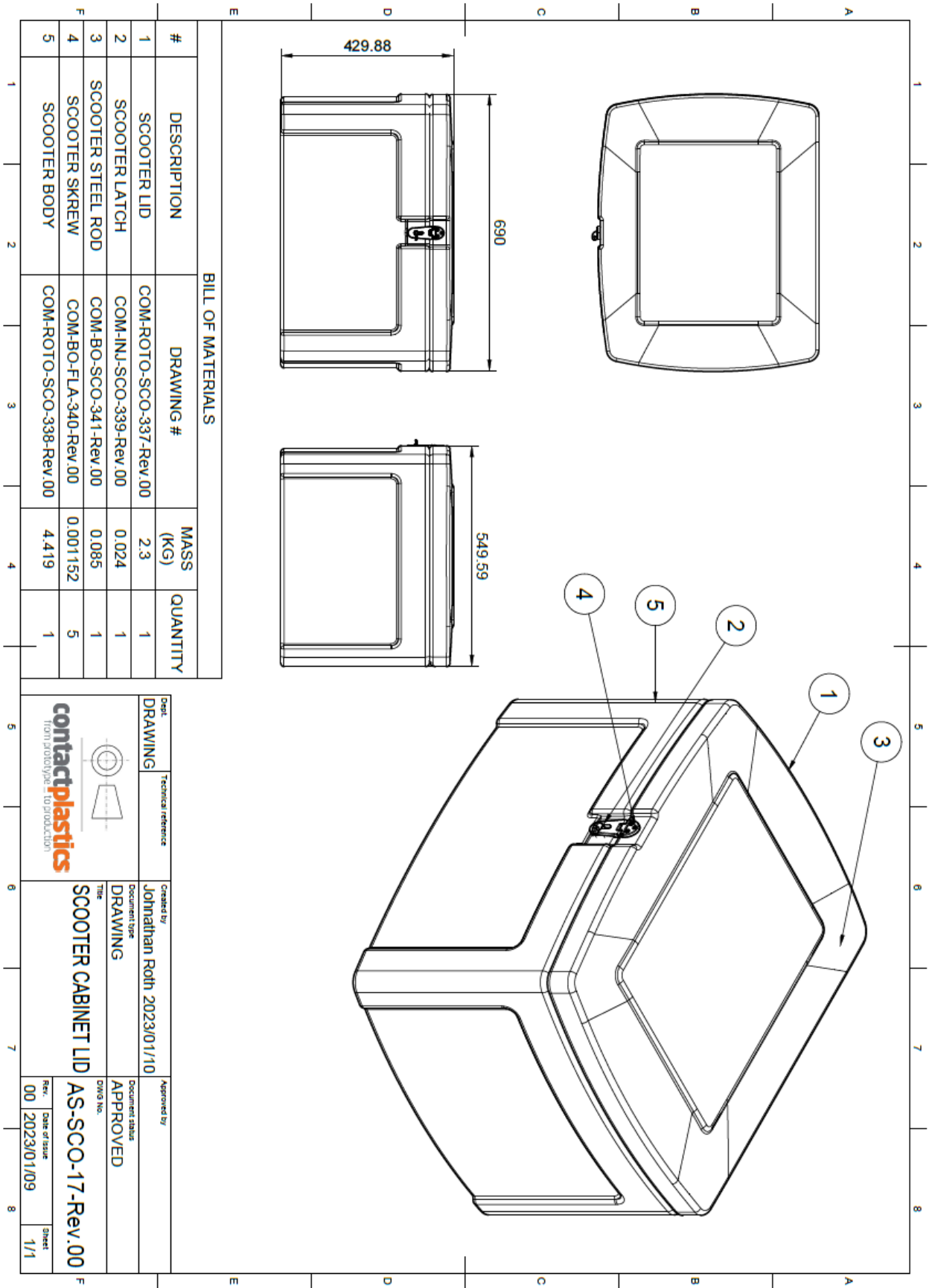
### Features:

Made from high quality virgin LLDPE • Ribbed design results in large internal strength  
 • Tough nylon latch • Moulded-in hinge for extreme durability • Double skin lid lends huge strength to cabinet design • Available in a wide range of stock colours • Custom colours available on request and subject to MoQ • Highly UV and temperature resistant • Polished surface allows for application and adhesion of large stickers and perspicuity tapes • Printed logos available on request • Internal volume: 0,12 m<sup>3</sup> ≈120 litres • Rear circular ribbing allows for mounting of optional license disk holder

SKU	Description	mm (A)	mm (B)	mm (C)	KG
TL-XX-01	Top Loader Cabinet v1.0	429	690	600	7,2

**X = Colour options:** Stock units carried in black. Other colours available on request.

Type	Length	Width	Height	Mass [kg]	Parts/Pallet	Diagram
Standard	1340	1200	1550	101,97	6 units	



**BILL OF MATERIALS**

#	DESCRIPTION	DRAWING #	MASS (KG)	QUANTITY
1	SCOOTER LID	COM-ROTO-SCO-337-Rev.00	2.3	1
2	SCOOTER LATCH	COM-INJ-SCO-339-Rev.00	0.024	1
3	SCOOTER STEEL ROD	COM-BO-SCO-341-Rev.00	0.085	1
4	SCOOTER SKREW	COM-BO-FLA-340-Rev.00	0.001152	5
5	SCOOTER BODY	COM-ROTO-SCO-338-Rev.00	4.419	1

Dept.	Technical reference	Created by	Approved by
DRAWING		Jonathan Roth 2023/01/10	
		Document type	Document status
		DRAWING	APPROVED
		DWG No.	
		AS-SCO-17-Rev.00	
		Rev.	Date of issue
		00	2023/01/09
		Sheet	1/1

