

## Hose Reel Cabinet

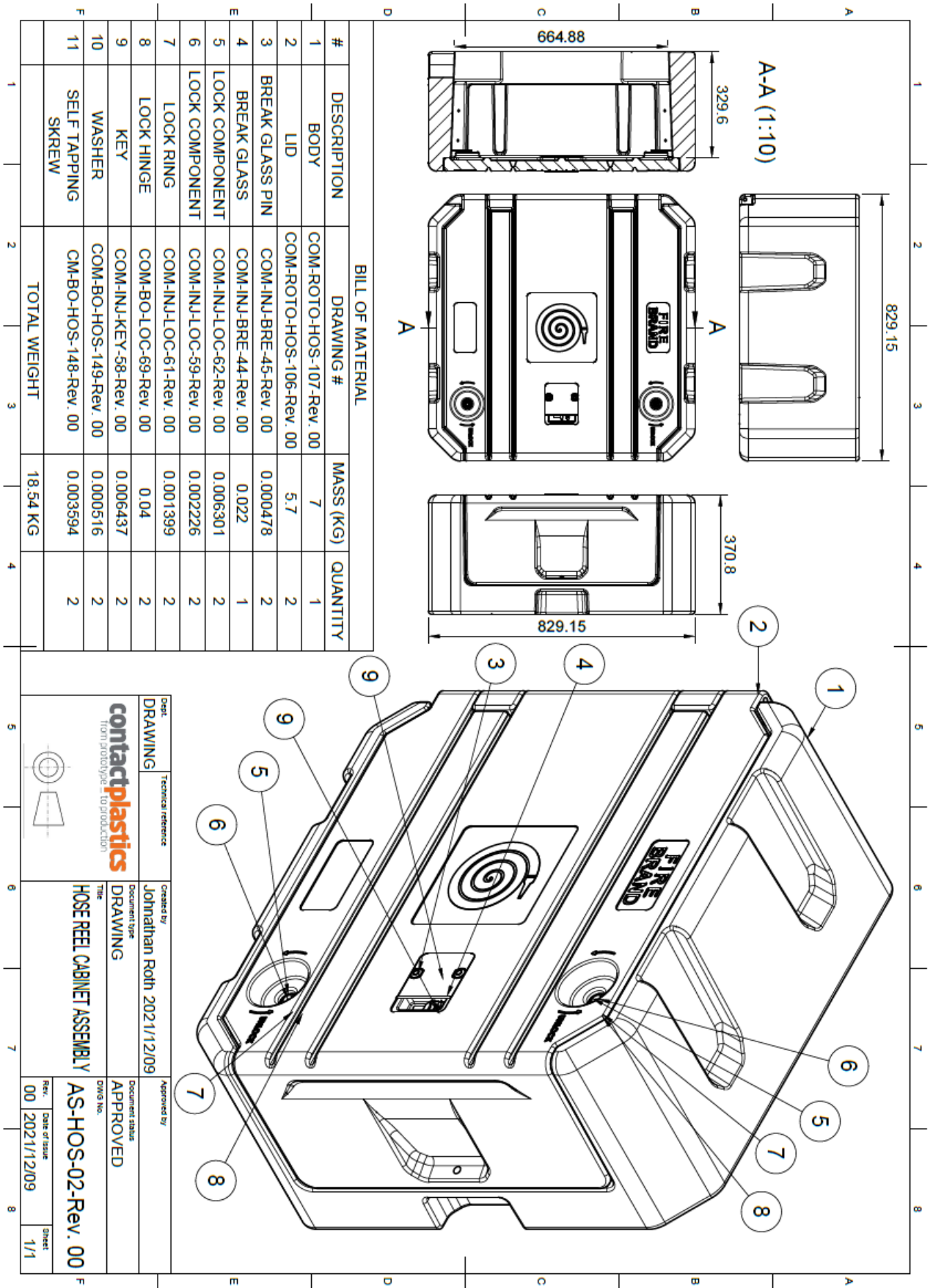


### Features:

Made from high quality virgin LLDPE • Replaceable snap glass system for easy servicing and maintenance • Uses the same key and lock as the rest of the range • Double-wall lid and body for extreme strength • Mould-in rear craters for ease of mounting • Available in a wide range of stock colours • Custom colours available on request and subject to MoQ • Heavy and wind resistant • Highly UV and temperature resistant • Sandblasted surface allows for greater friction on all outer surfaces • Customisation and logos can be included via inserts • Can accommodate both fixed and swing reels

SKU	Description	mm (A)	mm (B)	mm (C)	KG
HRC-01-X	Hose Reel Cabinet	830	830	370	19

**X = Colour options:** Stock units carried in red. Other colours available on request.



**BILL OF MATERIAL**

#	DESCRIPTION	DRAWING #	MASS (KG)	QUANTITY
1	BODY	COM-ROTO-HOS-107-Rev. 00	7	1
2	LID	COM-ROTO-HOS-106-Rev. 00	5.7	2
3	BREAK GLASS PIN	COM-INJ-BRE-45-Rev. 00	0.000478	2
4	BREAK GLASS	COM-INJ-BRE-44-Rev. 00	0.022	1
5	LOCK COMPONENT	COM-INJ-LOC-62-Rev. 00	0.006301	2
6	LOCK COMPONENT	COM-INJ-LOC-59-Rev. 00	0.002226	2
7	LOCK RING	COM-INJ-LOC-61-Rev. 00	0.001399	2
8	LOCK HINGE	COM-BO-LOC-69-Rev. 00	0.04	2
9	KEY	COM-INJ-KEY-58-Rev. 00	0.006437	2
10	WASHER	COM-BO-HOS-149-Rev. 00	0.000516	2
11	SELF TAPPING SKREW	CM-BO-HOS-148-Rev. 00	0.003594	2
	<b>TOTAL WEIGHT</b>		<b>18.54 KG</b>	

<p>contactplastics from prototype to production</p>	<p>Doc. No. <b>AS-HOS-02-Rev. 00</b></p> <p>Date of issue <b>2021/12/09</b></p>
	<p>Sheet <b>1/1</b></p>
<p>Doc. Type <b>DRAWING</b></p> <p>The <b>HOSE REEL CABINET ASSEMBLY</b></p>	<p>Created by <b>Johnathan Roth 2021/12/09</b></p> <p>Approved by</p>
<p>Doc. Reference <b>HOSE REEL CABINET ASSEMBLY</b></p>	<p>Document status <b>APPROVED</b></p>