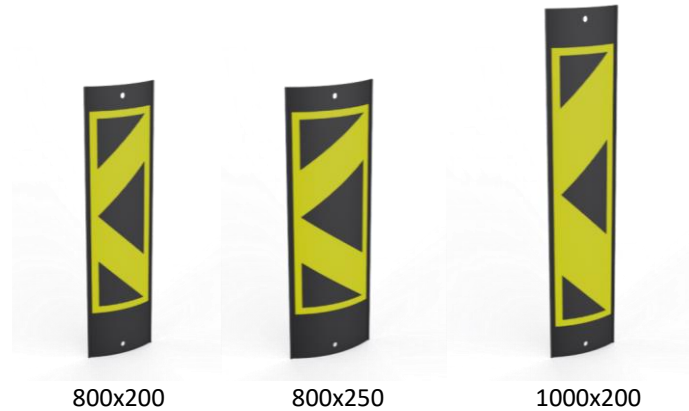


Economy Delineator Blades



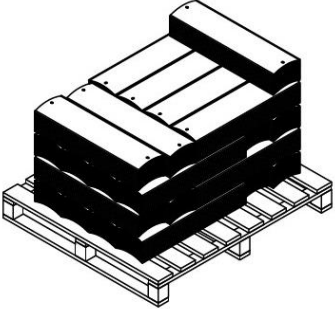
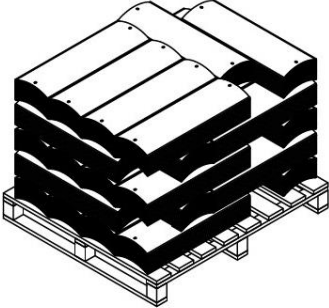
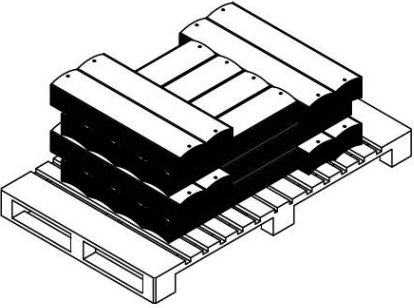
Features:

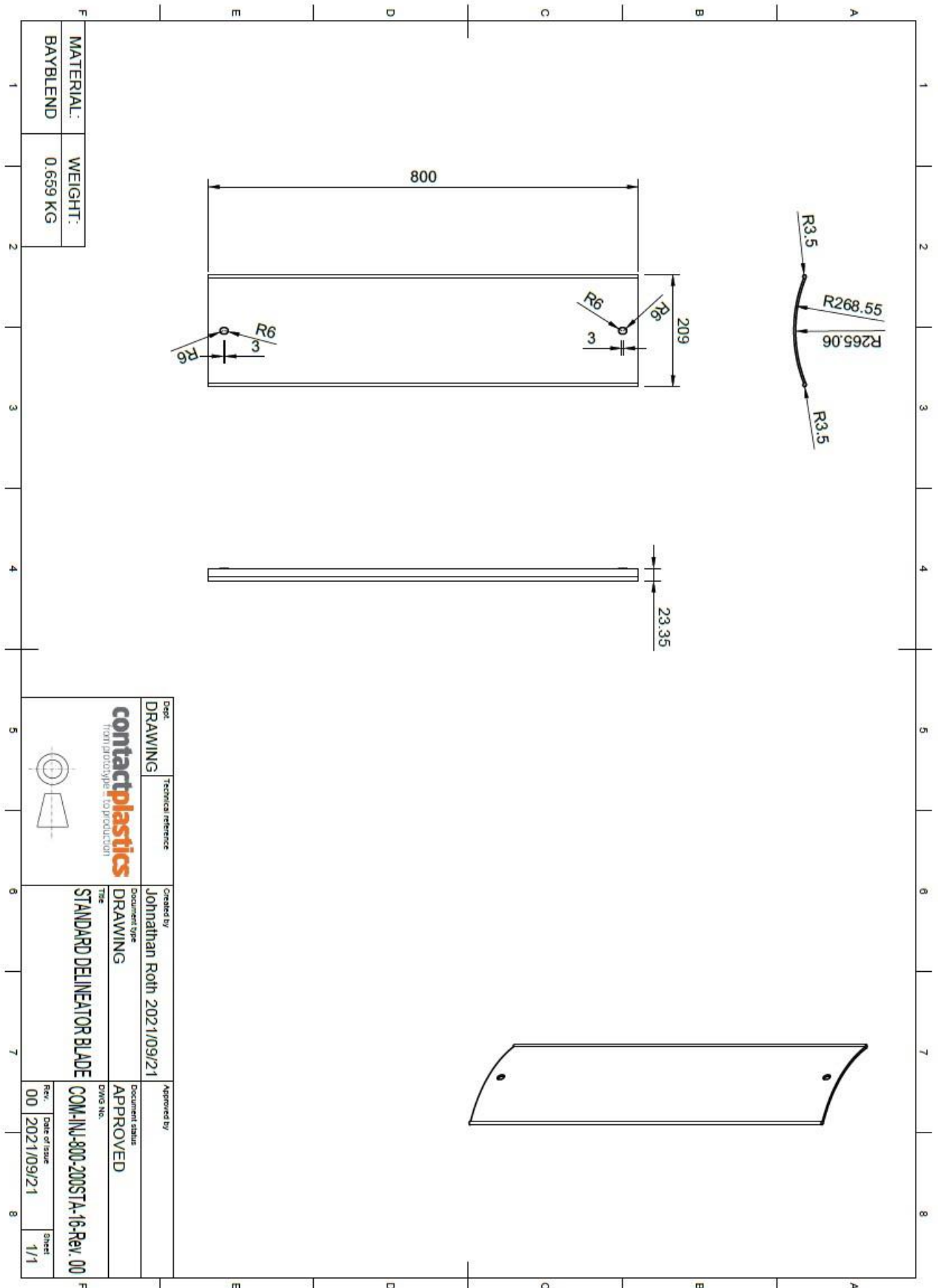
Made for high impact resistance • Stack and pack easily and suit standard pallets • All bases suit all econo blade types • Lock pins available on request • 4,5 and 10kg bases are self-supporting and do not require sandbags for ballast • Highly UV and temperature resistant •

SKU	Description	mm (A)	mm (B)	mm (C)	KG
DB-1-SD2	800x200 Economy Blade, Single Sided	800	209	23	0,659
DB-1-SD3	800x200 Economy Blade, Single Sided	800	209	23	0,659
DB-2-SD2	800x250 Economy Blade, Single Sided	800	259	35	0,823
DB-2-SD3	800x250 Economy Blade, Double Sided	800	259	35	0,823
DB-3-SD2	1000x200 Economy Blade, Single Sided	1000	209	23	0,823
DB-3-SD3	1000x200 Economy Blade, Single Sided	1000	209	23	0,823

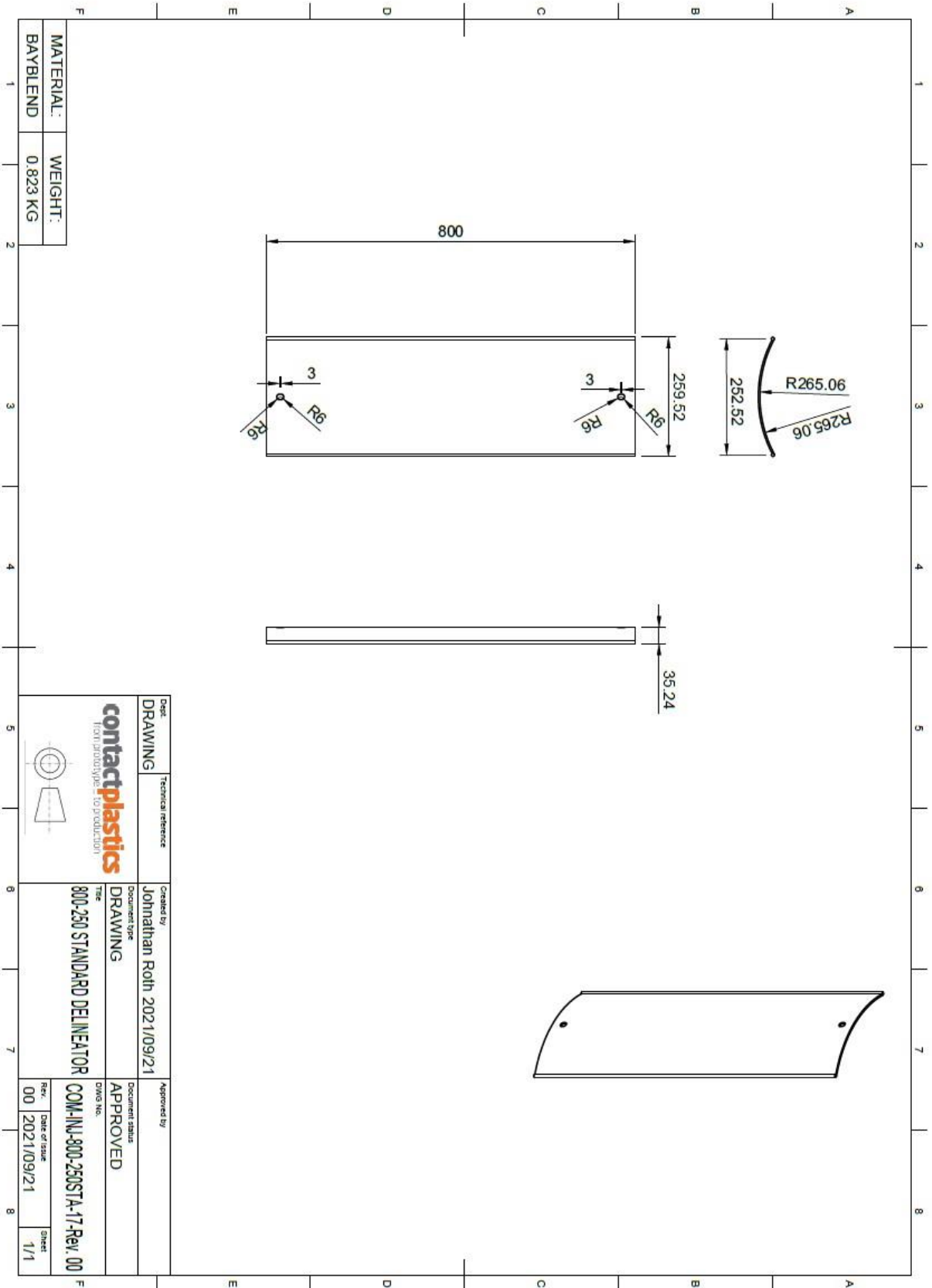
XX = Colour Option: Colours available include Black (Bl), yellow (Y).

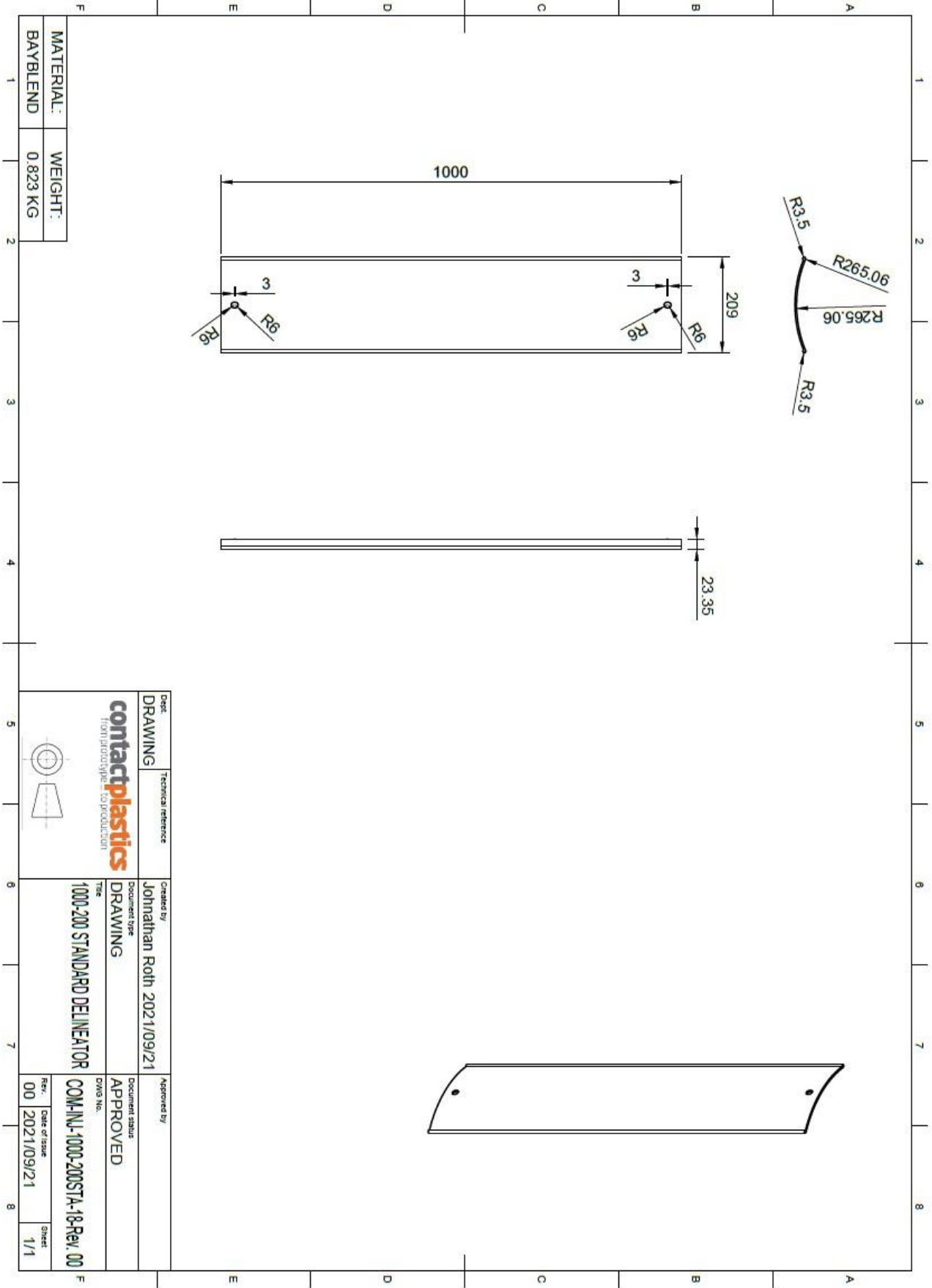
Palletisations

Type	Length [mm]	Width [mm]	Height [mm]	Mass [kg]	Parts/Pallet [units]	Diagram
800x200	1340	1200	951	356	500	
800x250	1340	1200	1002	520	600	
1000x200	2000	1200	794	376	400	



Dept. DRAWING	Technical reference
Created by Johnathan Roth 2021/09/21	Approved by
Document type DRAWING	Document status APPROVED
Type STANDARD DELINEATOR BLADE	COM-INV-900-200STA-16-Rev. 00
Rev. 00	Date of issue 2021/09/21
Sheet 1/1	





MATERIAL:	WEIGHT:
BAYBLEND	0.823 KG

Doc DRAWING	Technical reference	Created by Johnathan Roth 2021/09/21	Approved by
contactplastics from prototype type - to production		Document type DRAWING	Document status APPROVED
		Title 1000-200 STANDARD DELINEATOR	DWG No.
			Rev. Code of issue 00 2021/09/21
			Sheet 1/1