
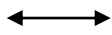
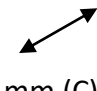



5kg CO₂ Fire Cabinet

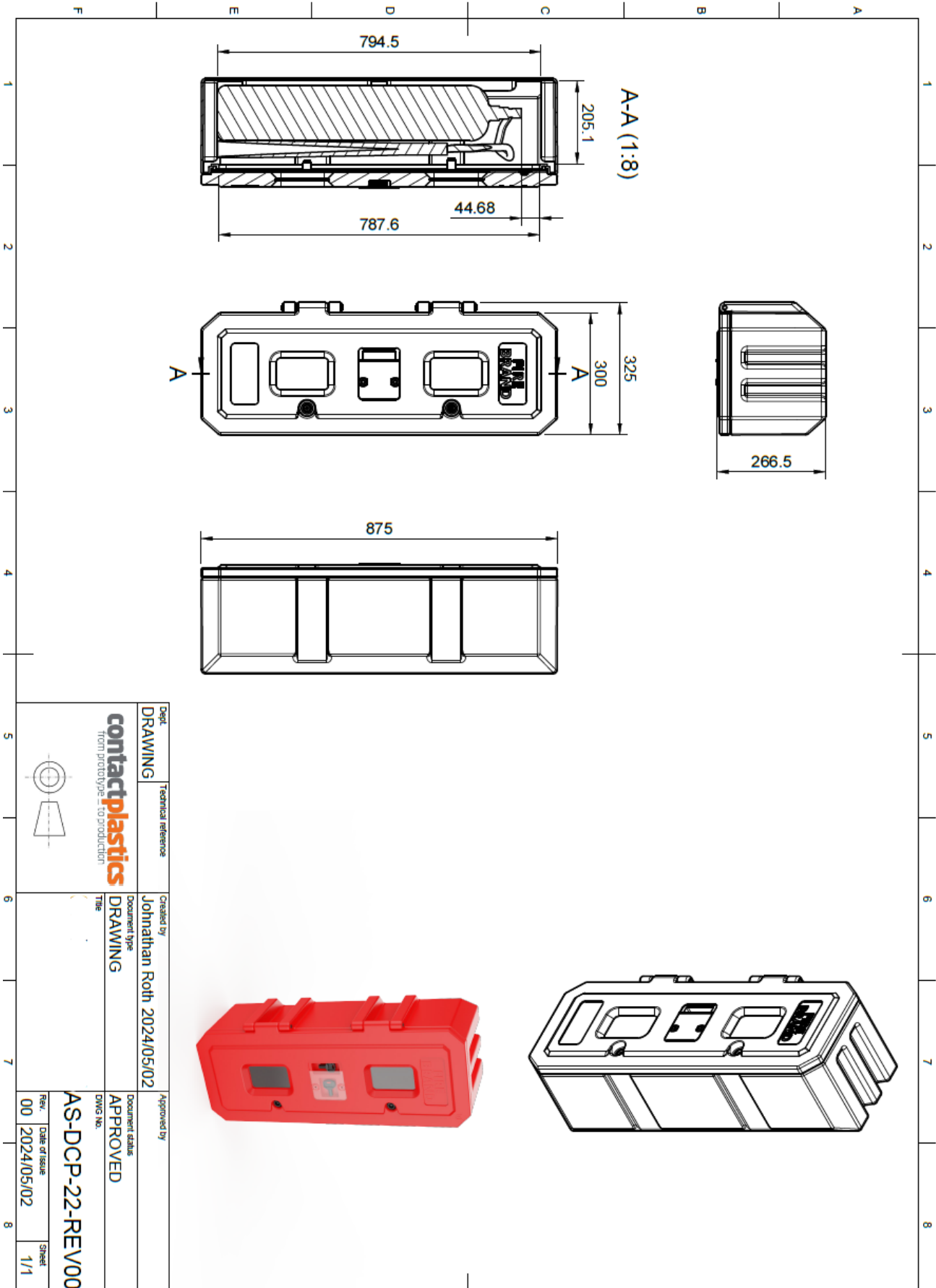


Features:

Made from high quality virgin LLDPE • Replaceable snap glass system for easy servicing and maintenance • Uses the same key and lock as the rest of the range • Clear moulded-in Impex windows for ease of inspection • All-around seal ensures no moisture ingress • Double-wall lid for extreme strength • Available in a wide range of stock colours • Custom colours available on request and subject to MoQ • Heavy and wind resistant • Highly UV and temperature resistant • Sandblasted surface allows for greater longevity in rough conditions • Also available in 4,5kg and 9kg DCP size

SKU	Description	 mm (A)	 mm (B)	 mm (C)	 KG
FB-04-X	5kg Fire Extinguisher Cabinet	875	325	266,5	6

X = Colour options: Stock units carried in red. Other colours available on request.



	Detail DRAWING	Technical reference contactplastics from prototype to production
Created by Johnathan Roth 2024/05/02	Document type DRAWING	Document status APPROVED
Approved by	DWG No. AS-DCP-22-REV00	Rev. / Date of Issue 00 / 2024/05/02
Sheet 1/1		